

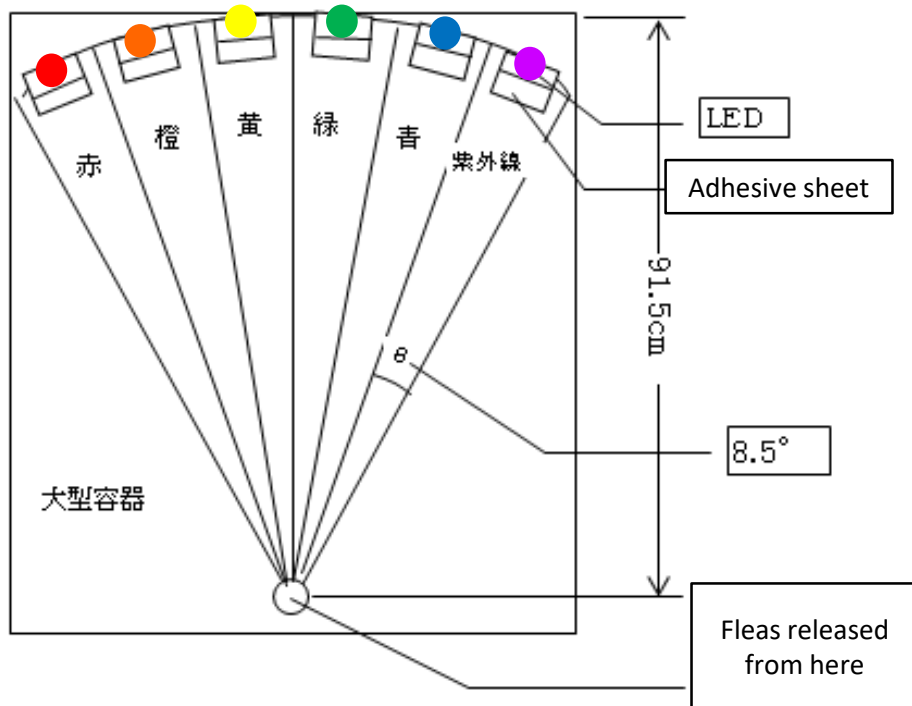
What light wavelength (color) attracts the most fleas ?

< Test method >

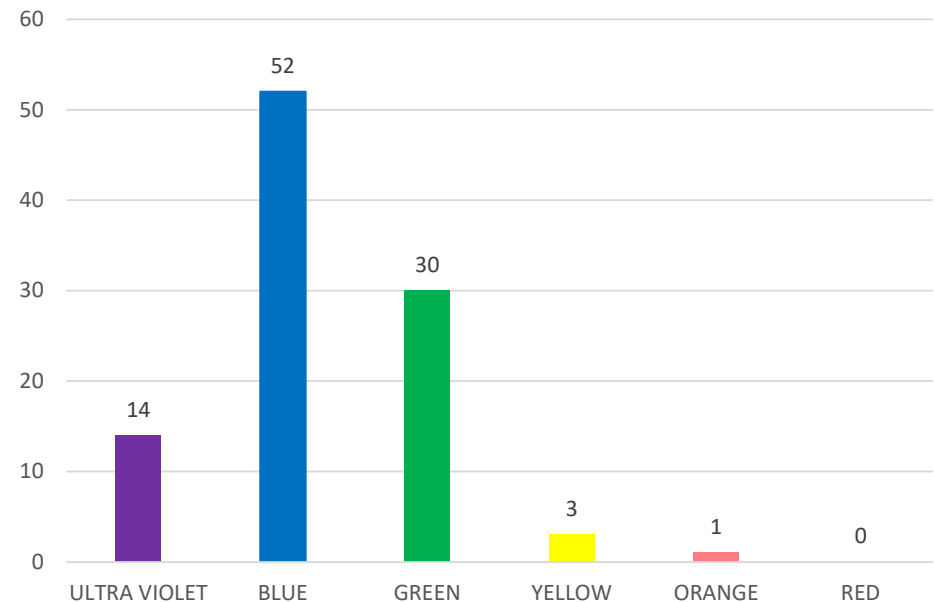
A trap with 6 types of LED light sources was placed inside a light-shielded large size container.

100 adult cat fleas were released inside and one hour later, the number of fleas captured by the trap was counted.

- Test device -



Number of fleas attracted to each color



The capture rate was highest for BLUE light

Effect in attracting cat fleas under incandescent lamp

< Test method >

An incandescent lamp was placed on one side in the device under a dark condition, and 50 adult cat fleas were released from the other side. The light source was flashing and after the release of cat fleas, the distribution and capture of cat fleas were measured over time course.

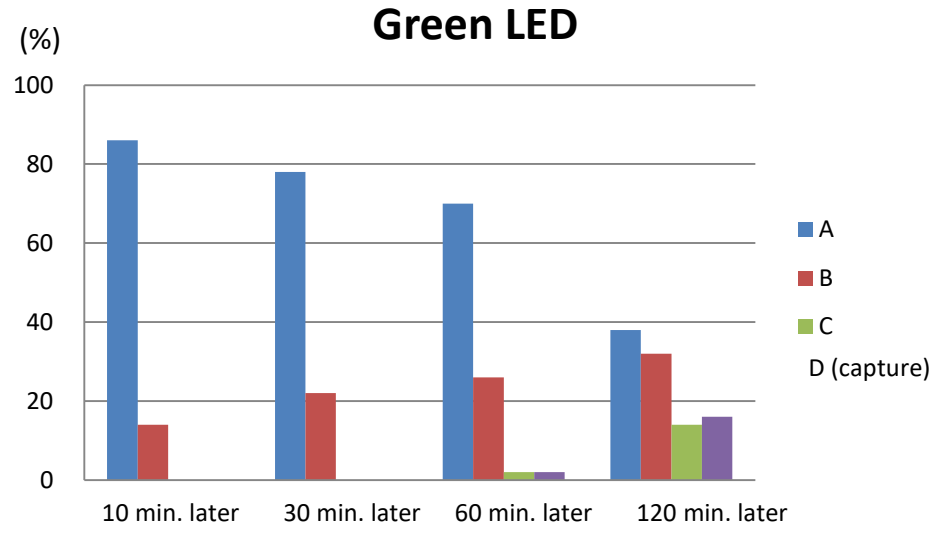
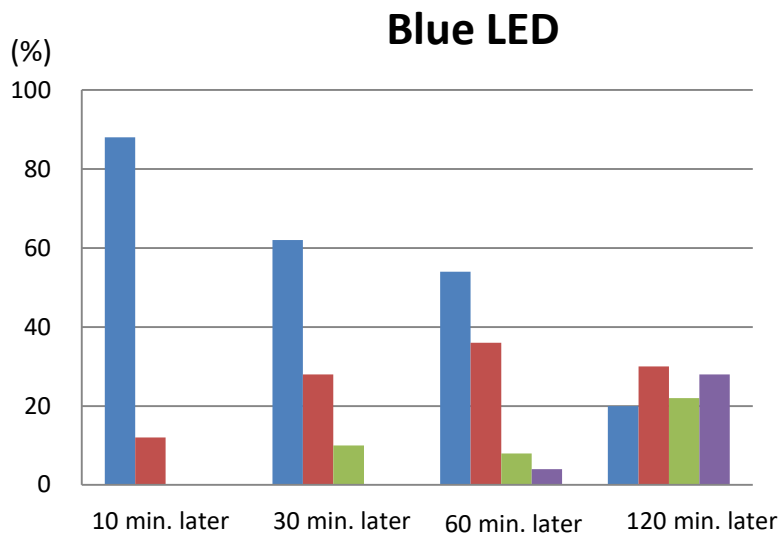
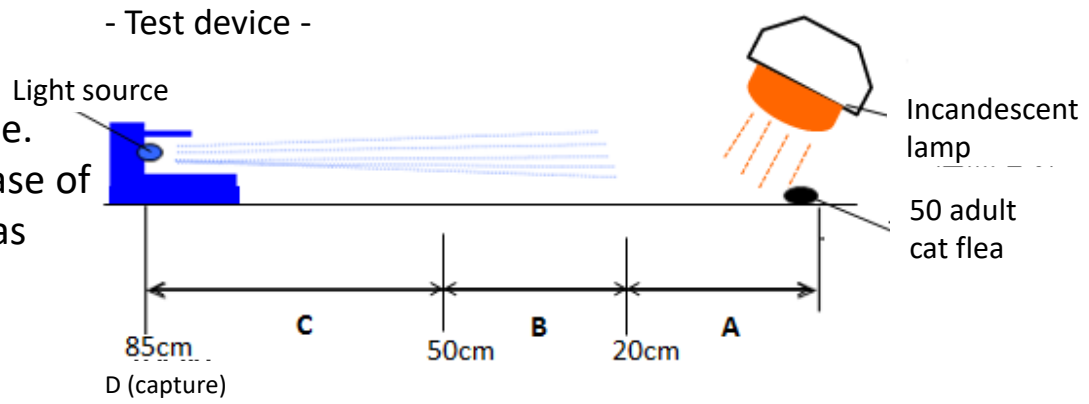


Figure 3: Comparison of attracting effect under incandescent lamp